

# Northwest Region Labor Market Status Report -- December 2009

## Civilian Labor Force:

	change since last...	month	year
Northwest Region	--	↓	↓
Pennsylvania	↓	↓	↓
United States	↓	↓	↓

## Employed Population:

	change since last...	month	year
Northwest Region	↓	↓	↓
Pennsylvania	↓	↓	↓
United States	↓	↓	↓

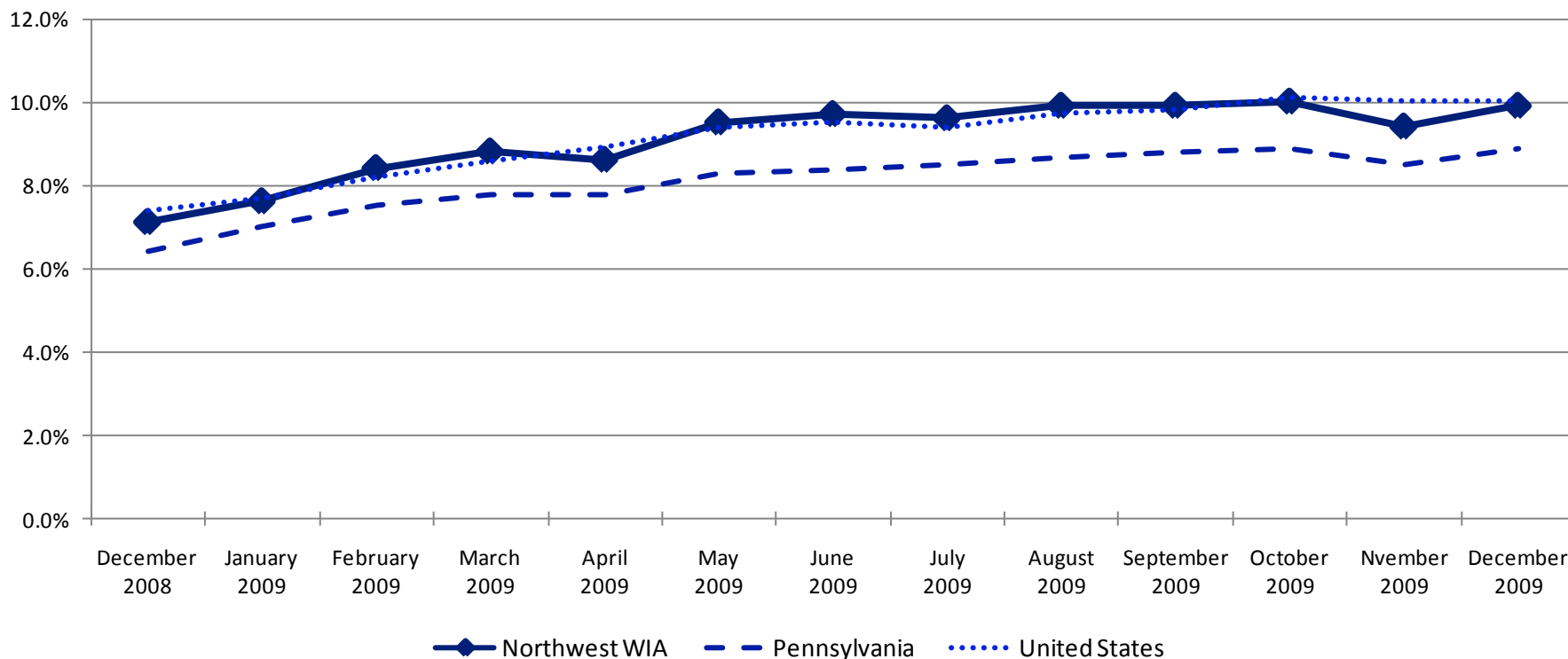
## Unemployed Population:

	change since last...	month	year
Northwest Region	↑	↑	↑
Pennsylvania	↑	↑	↑
United States	↓	↑	↑

## Unemployment Rate:

	change since last...	month	year
Northwest Region	↑	↑	↑
Pennsylvania	↑	↑	↑
United States	--	↑	↑

## Unemployment Rates



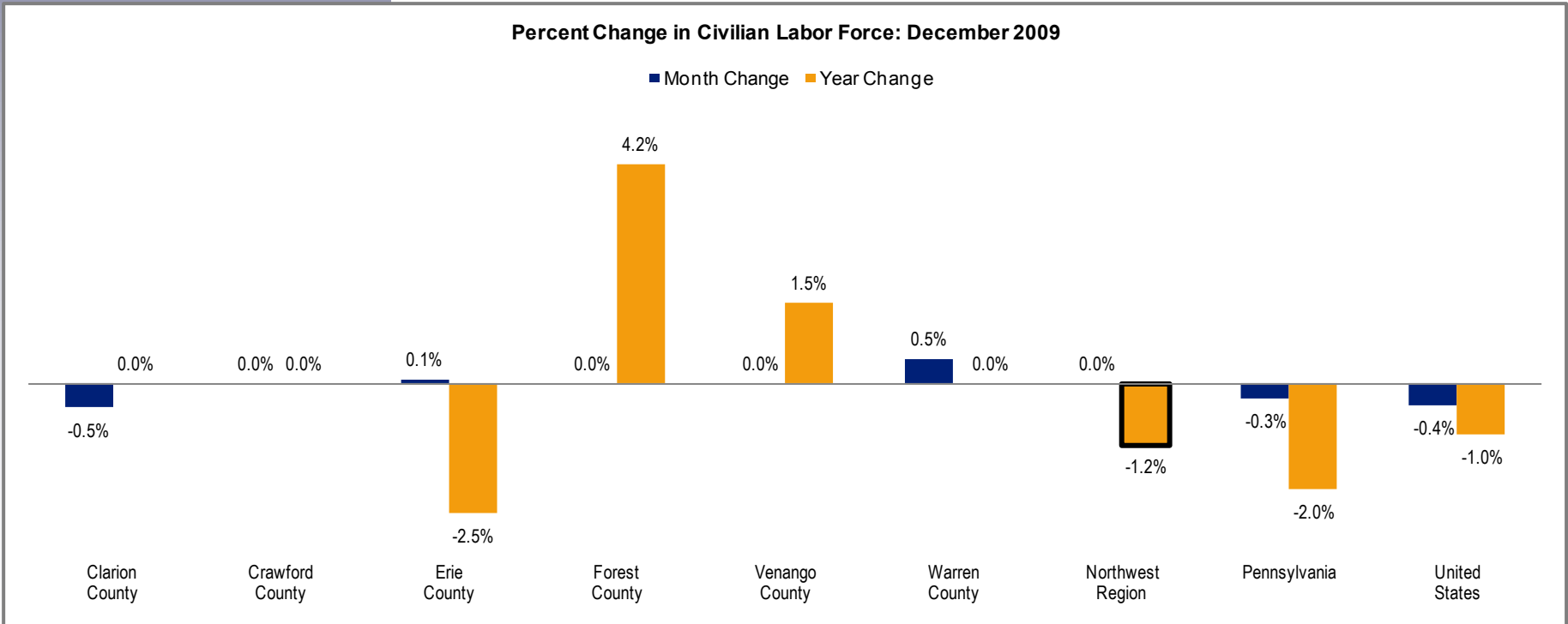
**Civilian Labor Force**

Clarion County	20,900
Crawford County	43,300
Erie County	138,000
Forest County	2,500
Venango County	26,600
Warren County	21,800

The labor force is comprised of individuals who are working, waiting for a layoff to end, or are actively seeking work. The graph below highlights changes in the civilian labor force as a percentage of an area's total civilian labor force.

	Change Since		
	December 2009	November 2009	December 2008
<b>Northwest Region</b>	<b>252,900</b>	<b>0</b>	<b>-3,000</b>
Pennsylvania	6,310,000	-19,000	-131,000
United States	153,059,000	-661,000	-1,528,000

**Percent Change in Civilian Labor Force: December 2009**

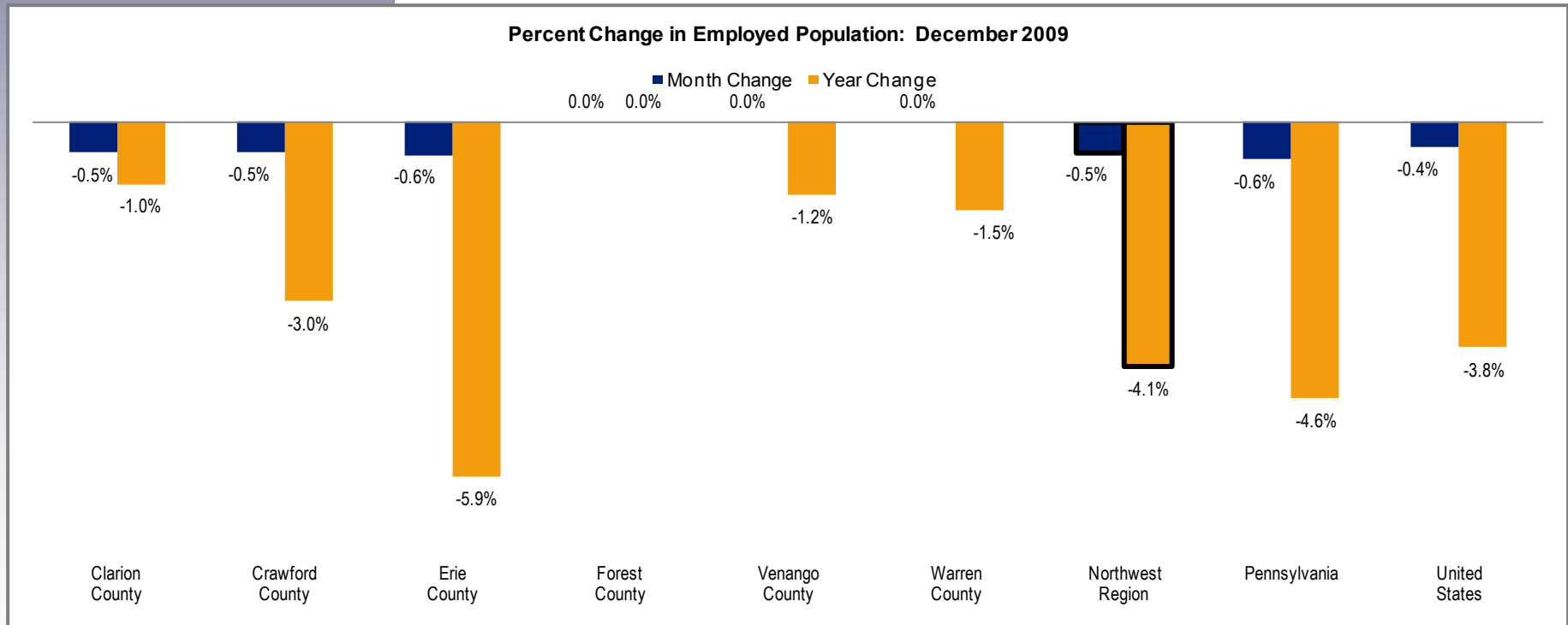


## Employed Population

Clarion County	18,900
Crawford County	38,800
Erie County	124,200
Forest County	2,200
Venango County	24,100
Warren County	20,000

The employed population includes individuals who are working. The graph below highlights changes in employment as a percentage of an area's total employment.

	Change Since		
	December 2009	November 2009	December 2008
<b>Northwest Region</b>	<b>228,000</b>	<b>-1,200</b>	<b>-9,700</b>
Pennsylvania	5,751,000	-37,000	-278,000
United States	137,792,000	-589,000	-5,396,000



### Unemployed Population

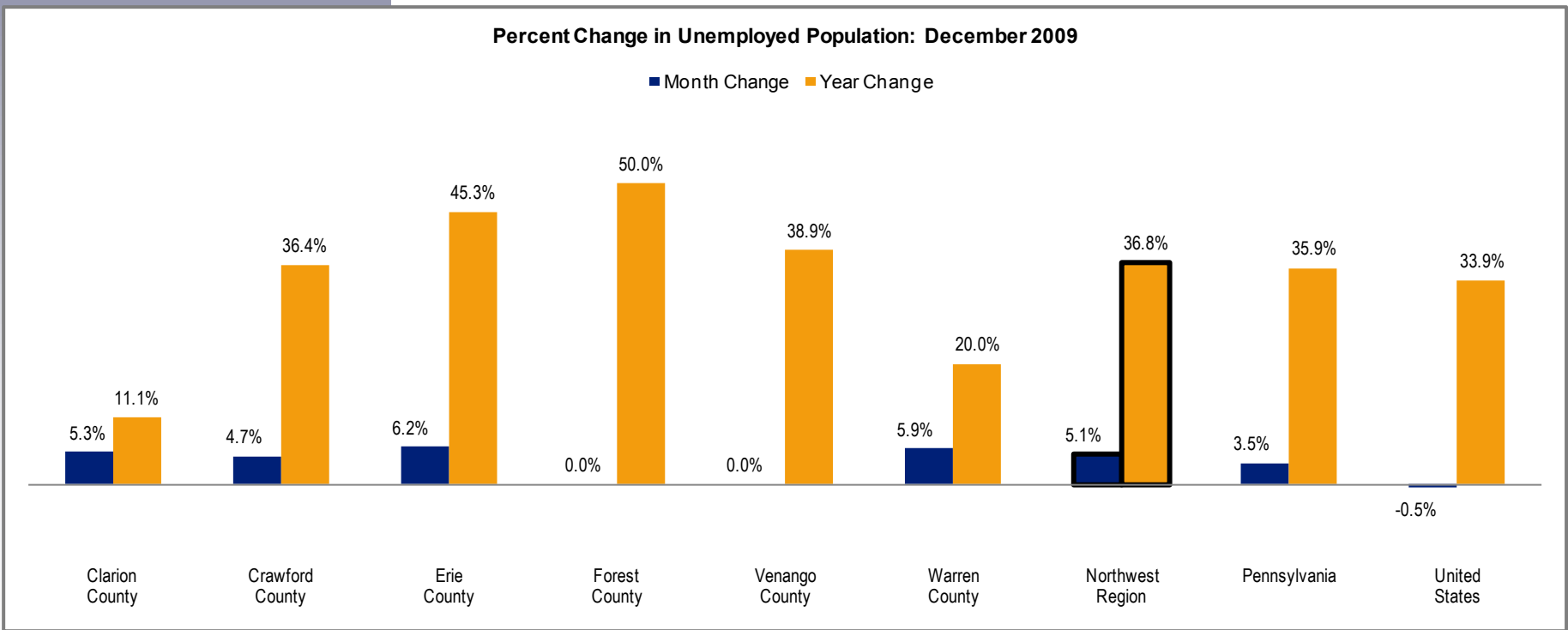
Clarion County	2,000
Crawford County	4,500
Erie County	13,800
Forest County	300
Venango County	2,500
Warren County	1,800

The unemployed population is made up of individuals who are not working, but are waiting for a layoff to end or are actively seeking work. The graph below highlights changes in unemployment as a percentage of an area's total unemployment.

	Change Since		
	December 2009	November 2009	December 2008
<b>Northwest Region</b>	<b>24,900</b>	<b>1,200</b>	<b>6,700</b>
Pennsylvania	560,000	19,000	148,000
United States	15,267,000	-73,000	3,867,000

**Percent Change in Unemployed Population: December 2009**

■ Month Change ■ Year Change



## Unemployment Rates

	December 2009	November 2009	December 2008
Clarion County	9.7%	9.2%	8.7%
Crawford County	10.4%	9.9%	7.6%
Erie County	10.0%	9.4%	6.7%
Forest County	11.8%	11.4%	9.2%
Venango County	9.4%	9.3%	7.0%
Warren County	8.3%	7.8%	6.7%
<b>Northwest Region</b>	<b>9.9%</b>	<b>9.4%</b>	<b>7.1%</b>
Pennsylvania	8.9%	8.5%	6.4%
United States	10.0%	10.0%	7.4%

The unemployment rate represents the proportion of individuals in the civilian labor force who are not working, but are waiting for a layoff to end or are actively seeking work. The graph below highlights changes in unemployment rates.

