

# Northwest Region Labor Market Status Report -- February 2010

## Civilian Labor Force:

change since last... month year

|                  |   |   |
|------------------|---|---|
| Northwest Region | ↑ | ↑ |
| Pennsylvania     | ↑ | ↑ |
| United States    | ↑ | ↓ |

## Employed Population:

change since last... month year

|                  |   |   |
|------------------|---|---|
| Northwest Region | ↑ | ↓ |
| Pennsylvania     | ↑ | ↓ |
| United States    | ↑ | ↓ |

## Unemployed Population:

change since last... month year

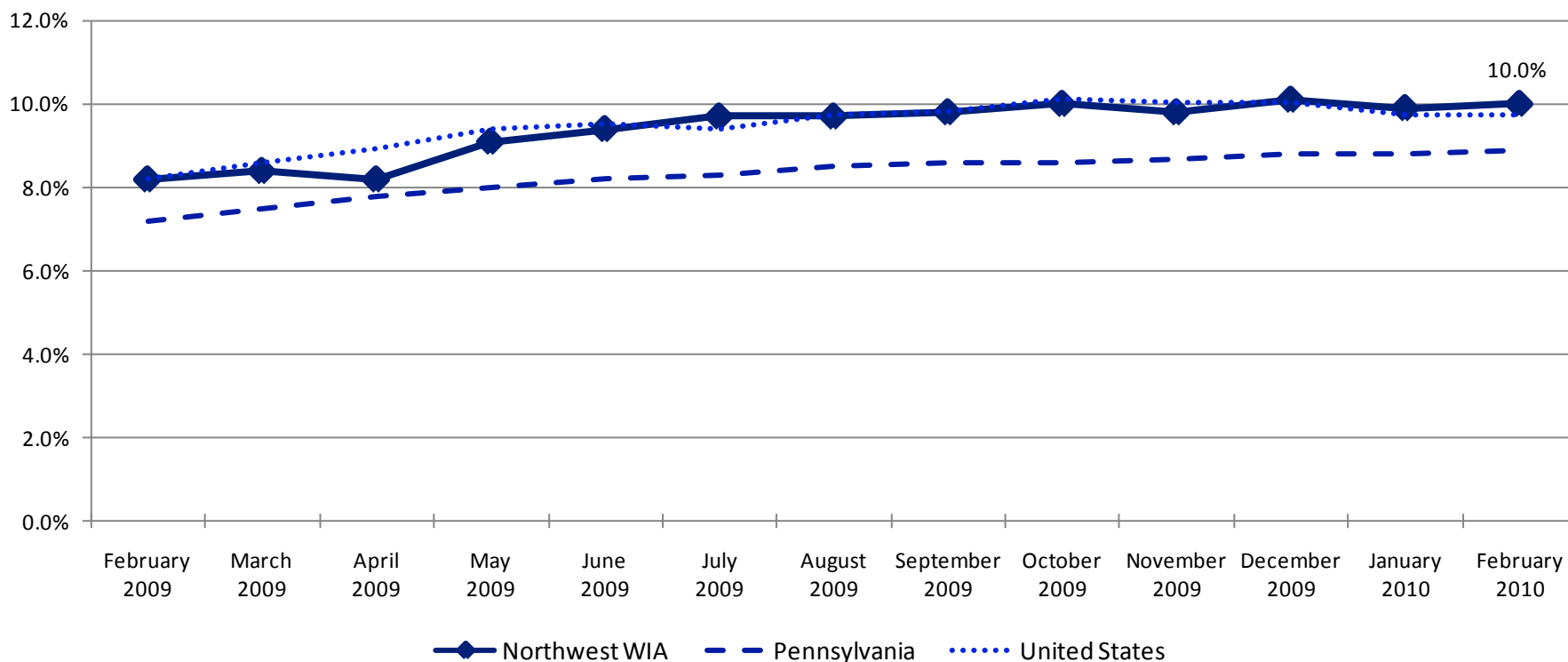
|                  |   |   |
|------------------|---|---|
| Northwest Region | ↑ | ↑ |
| Pennsylvania     | ↑ | ↑ |
| United States    | ↑ | ↑ |

## Unemployment Rate:

change since last... month year

|                  |    |   |
|------------------|----|---|
| Northwest Region | ↑  | ↑ |
| Pennsylvania     | ↑  | ↑ |
| United States    | -- | ↑ |

## Unemployment Rates



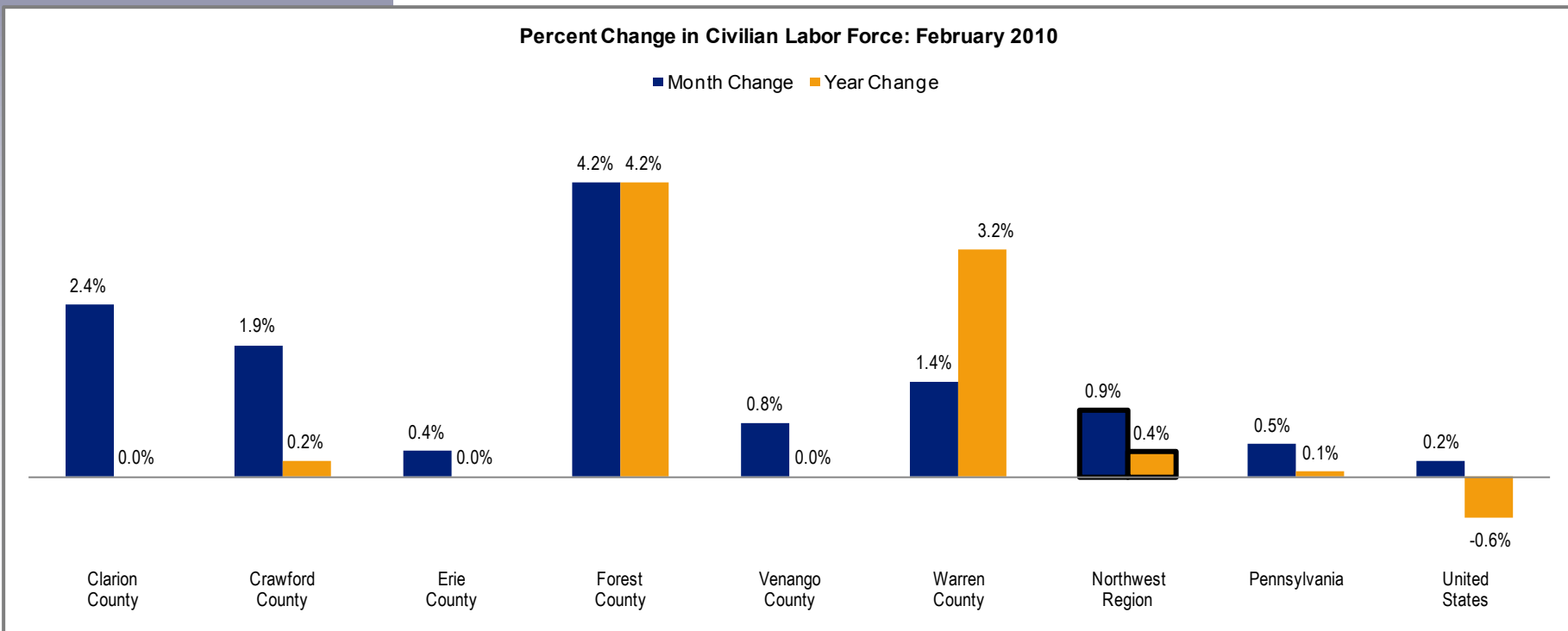
### Civilian Labor Force

|                 |         |
|-----------------|---------|
| Clarion County  | 21,100  |
| Crawford County | 43,700  |
| Erie County     | 141,400 |
| Forest County   | 2,500   |
| Venango County  | 26,600  |
| Warren County   | 22,500  |

The labor force is comprised of individuals who are working, waiting for a layoff to end, or are actively seeking work. The graph below highlights changes in the civilian labor force as a percentage of an area's total civilian labor force.

|                         | Change Since   |              |               |
|-------------------------|----------------|--------------|---------------|
|                         | February 2010  | January 2010 | February 2009 |
| <b>Northwest Region</b> | <b>258,000</b> | <b>2,400</b> | <b>900</b>    |
| Pennsylvania            | 6,451,000      | 29,000       | 4,000         |
| United States           | 153,512,000    | 342,000      | -889,000      |

Percent Change in Civilian Labor Force: February 2010



### Employed Population

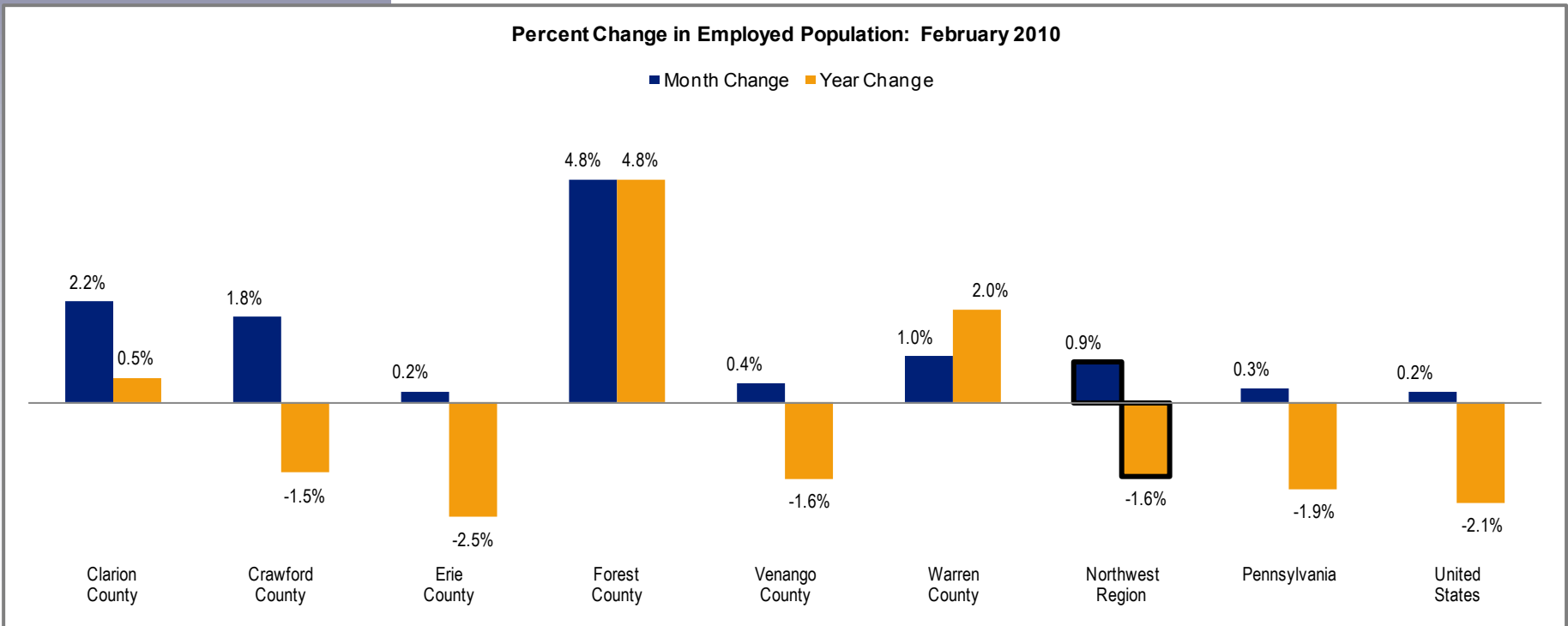
|                 |         |
|-----------------|---------|
| Clarion County  | 19,000  |
| Crawford County | 39,100  |
| Erie County     | 127,200 |
| Forest County   | 2,200   |
| Venango County  | 24,100  |
| Warren County   | 20,600  |

The employed population includes individuals who are working. The graph below highlights changes in employment as a percentage of an area's total employment.

|                         | Change Since   |              |               |
|-------------------------|----------------|--------------|---------------|
|                         | February 2010  | January 2010 | February 2009 |
| <b>Northwest Region</b> | <b>232,400</b> | <b>2,000</b> | <b>-3,700</b> |
| Pennsylvania            | 5,875,000      | 18,000       | -111,000      |
| United States           | 138,641,000    | 308,000      | -3,046,000    |

**Percent Change in Employed Population: February 2010**

■ Month Change ■ Year Change



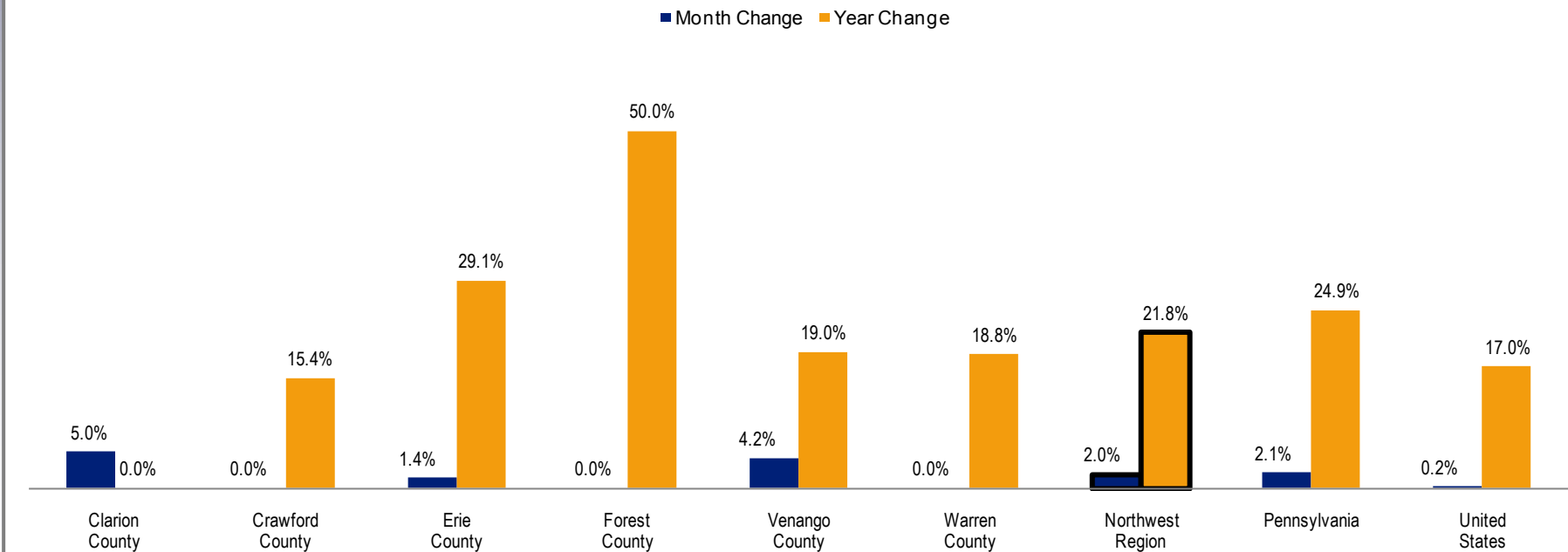
## Unemployed Population

|                 |        |
|-----------------|--------|
| Clarion County  | 2,100  |
| Crawford County | 4,500  |
| Erie County     | 14,200 |
| Forest County   | 300    |
| Venango County  | 2,500  |
| Warren County   | 1,900  |

The unemployed population is made up of individuals who are not working, but are waiting for a layoff to end or are actively seeking work. The graph below highlights changes in unemployment as a percentage of an area's total unemployment.

|                         | Change Since  |              |               |
|-------------------------|---------------|--------------|---------------|
|                         | February 2010 | January 2010 | February 2009 |
| <b>Northwest Region</b> | <b>25,700</b> | <b>500</b>   | <b>4,600</b>  |
| Pennsylvania            | 577,000       | 12,000       | 115,000       |
| United States           | 14,871,000    | 34,000       | 2,157,000     |

Percent Change in Unemployed Population: February 2010



## Unemployment Rates

|                         | February 2010 | January 2010 | February 2009 |
|-------------------------|---------------|--------------|---------------|
| Clarion County          | 9.9%          | 9.9%         | 10.1%         |
| Crawford County         | 10.3%         | 10.5%        | 9.0%          |
| Erie County             | 10.1%         | 10.0%        | 7.8%          |
| Forest County           | 13.3%         | 13.1%        | 9.9%          |
| Venango County          | 9.4%          | 9.2%         | 7.9%          |
| Warren County           | 8.6%          | 8.3%         | 7.4%          |
| <b>Northwest Region</b> | <b>10.0%</b>  | <b>9.9%</b>  | <b>8.2%</b>   |
| Pennsylvania            | 8.9%          | 8.8%         | 7.2%          |
| United States           | 9.7%          | 9.7%         | 8.2%          |

The unemployment rate represents the proportion of individuals in the civilian labor force who are not working, but are waiting for a layoff to end or are actively seeking work. The graph below highlights changes in unemployment rates.

Change in Unemployment Rate: February 2010

