

Northwest Region Labor Market Status Report -- March 2010

Civilian Labor Force:

change since last... month year

Northwest Region	↓	↑
Pennsylvania	↑	↑
United States	↑	↓

Employed Population:

change since last... month year

Northwest Region	--	↓
Pennsylvania	↑	↓
United States	↑	↓

Unemployed Population:

change since last... month year

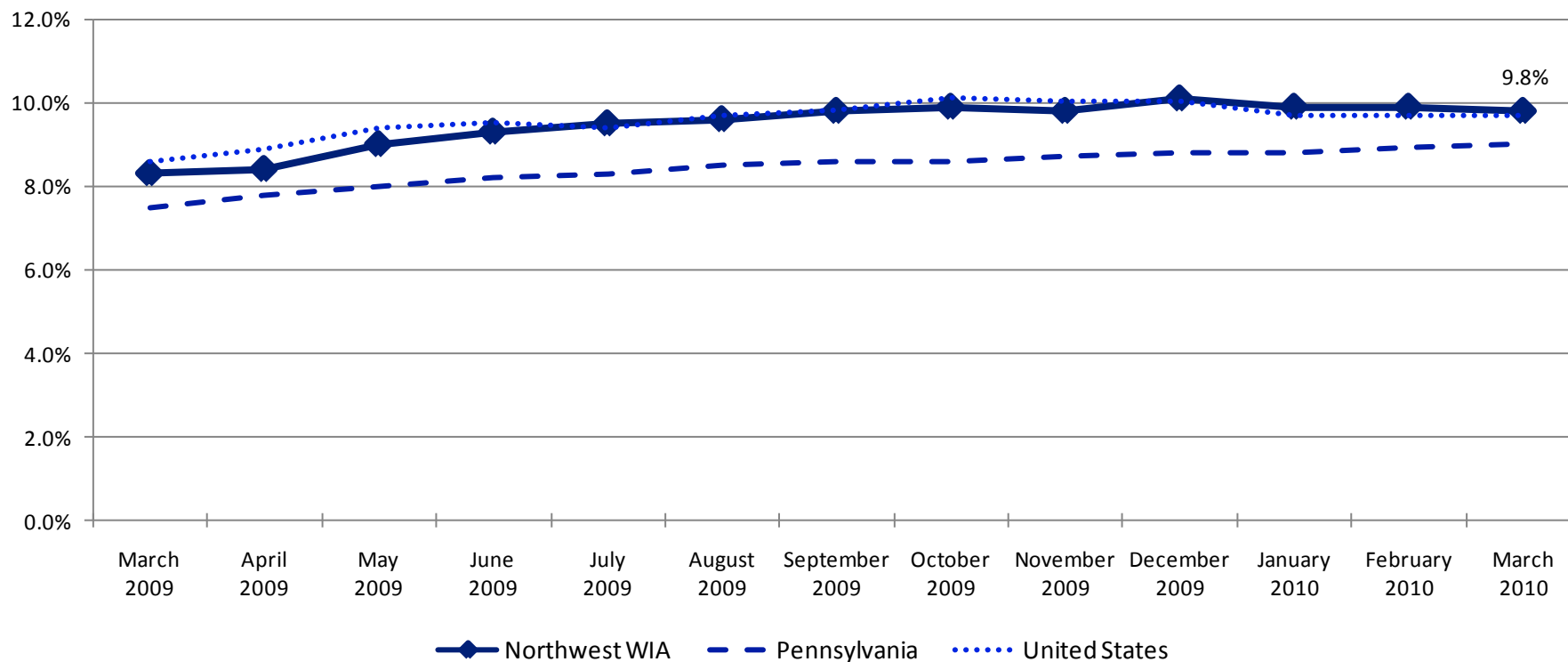
Northwest Region	↓	↑
Pennsylvania	↑	↑
United States	↑	↑

Unemployment Rate:

change since last... month year

Northwest Region	↓	↑
Pennsylvania	↑	↑
United States	--	↑

Unemployment Rates



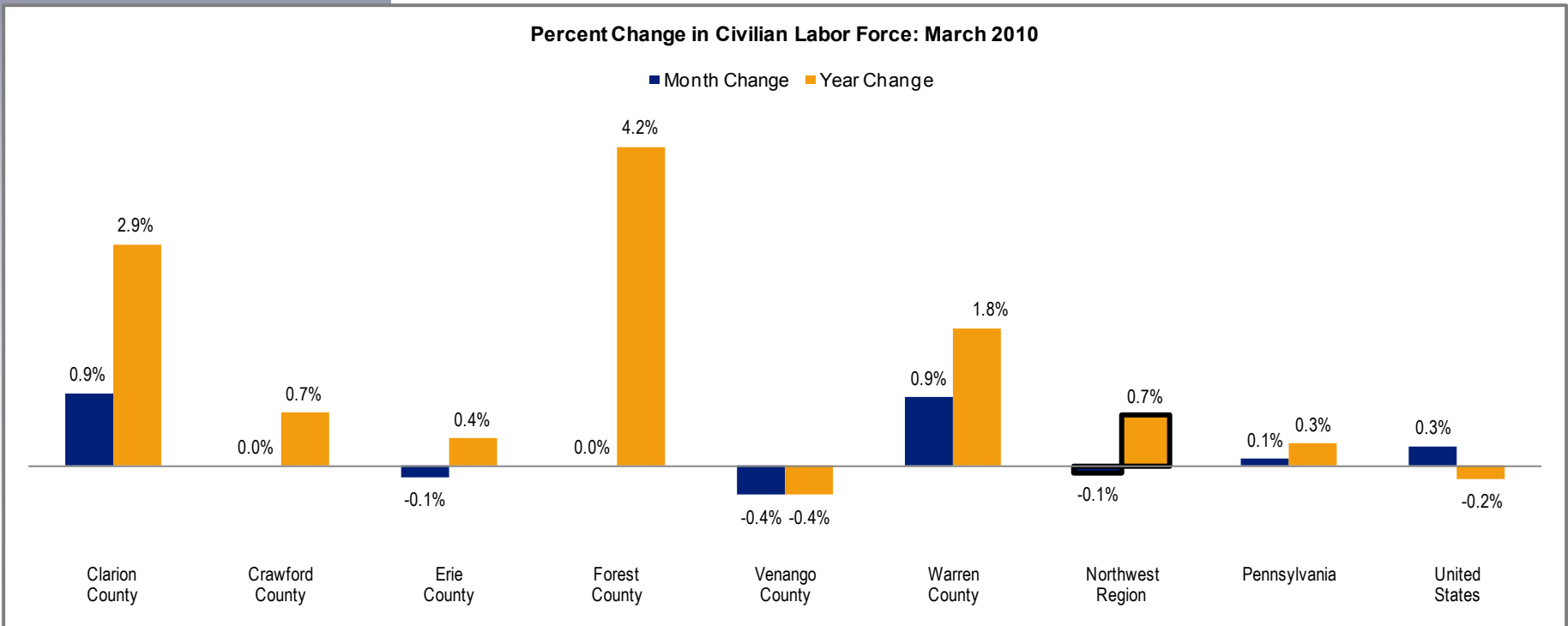
Civilian Labor Force

Clarion County	21,300
Crawford County	43,600
Erie County	141,200
Forest County	2,500
Venango County	26,500
Warren County	22,600

The labor force is comprised of individuals who are working, waiting for a layoff to end, or are actively seeking work. The graph below highlights changes in the civilian labor force as a percentage of an area's total civilian labor force.

	Change Since		
	March 2010	February 2010	March 2009
Northwest Region	257,600	-200	1,700
Pennsylvania	6,458,000	6,000	19,000
United States	153,910,000	398,000	-254,000

Percent Change in Civilian Labor Force: March 2010



Employed Population

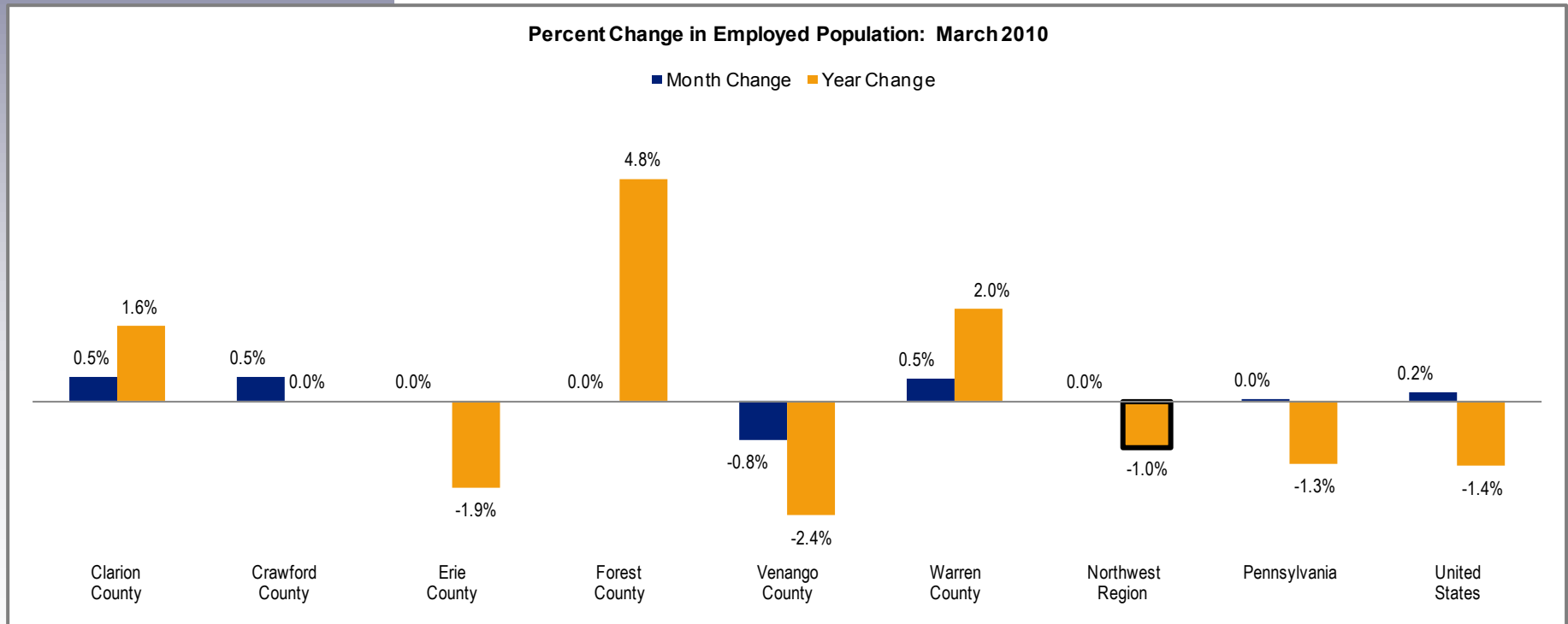
Clarion County	19,100
Crawford County	39,300
Erie County	127,100
Forest County	2,200
Venango County	23,900
Warren County	20,700

The employed population includes individuals who are working. The graph below highlights changes in employment as a percentage of an area's total employment.

	Change Since		
	March 2010	February 2010	March 2009
Northwest Region	232,300	0	-2,300
Pennsylvania	5,876,000	2,000	-80,000
United States	138,905,000	264,000	-1,949,000

Percent Change in Employed Population: March 2010

■ Month Change ■ Year Change



Unemployed Population

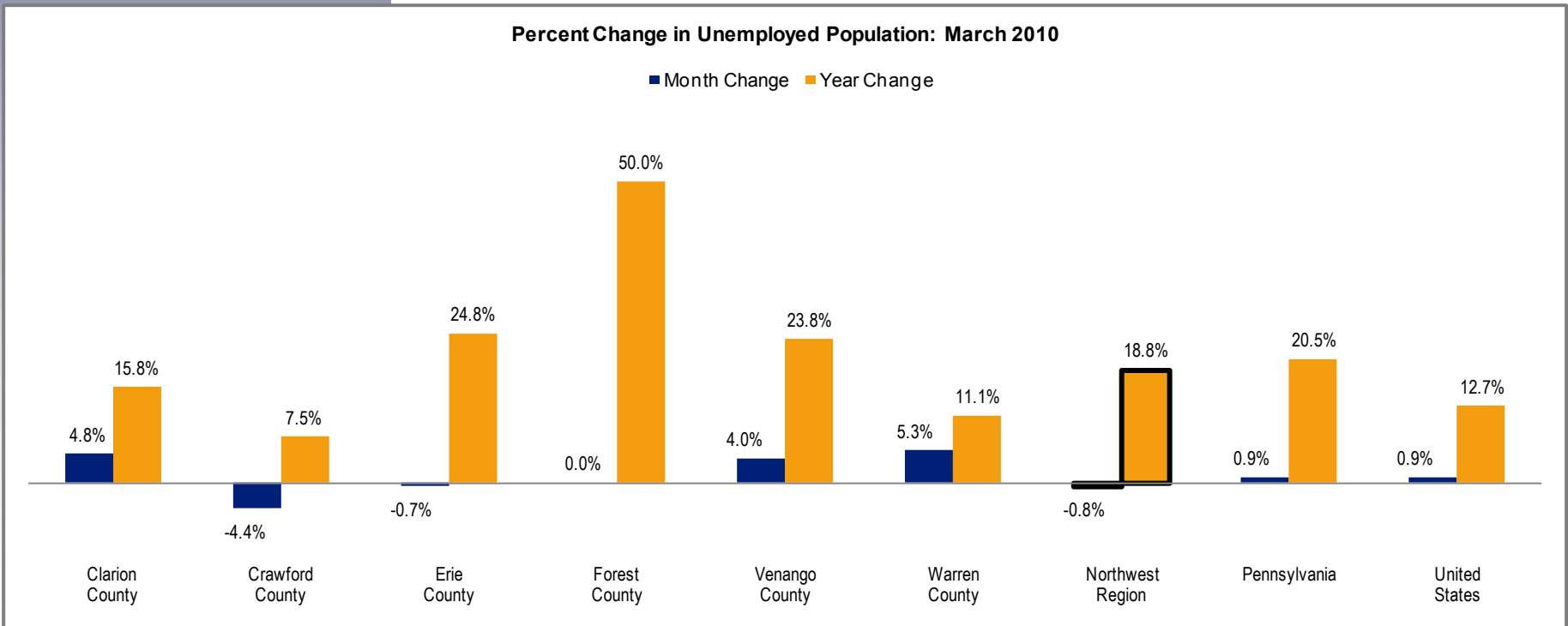
Clarion County	2,200
Crawford County	4,300
Erie County	14,100
Forest County	300
Venango County	2,600
Warren County	2,000

The unemployed population is made up of individuals who are not working, but are waiting for a layoff to end or are actively seeking work. The graph below highlights changes in unemployment as a percentage of an area's total unemployment.

	March 2010	Change Since	
		February 2010	March 2009
Northwest Region	25,300	-200	4,000
Pennsylvania	582,000	5,000	99,000
United States	15,005,000	134,000	1,695,000

Percent Change in Unemployed Population: March 2010

■ Month Change ■ Year Change



Unemployment Rates

	March 2010	February 2010	March 2009
Clarion County	10.2%	9.9%	9.3%
Crawford County	10.0%	10.3%	9.2%
Erie County	10.0%	10.1%	8.0%
Forest County	11.7%	13.0%	10.0%
Venango County	9.7%	9.4%	8.1%
Warren County	8.6%	8.3%	8.3%
Northwest Region	9.8%	9.9%	8.3%
Pennsylvania	9.0%	8.9%	7.5%
United States	9.7%	9.7%	8.6%

The unemployment rate represents the proportion of individuals in the civilian labor force who are not working, but are waiting for a layoff to end or are actively seeking work. The graph below highlights changes in unemployment rates.

