

Northwest Region Labor Market Status Report -- January 2010

Civilian Labor Force:

change since last... month year

Northwest Region	↑	↓
Pennsylvania	↑	↓
United States	↑	↓

Employed Population:

change since last... month year

Northwest Region	↑	↓
Pennsylvania	↑	↓
United States	↑	↓

Unemployed Population:

change since last... month year

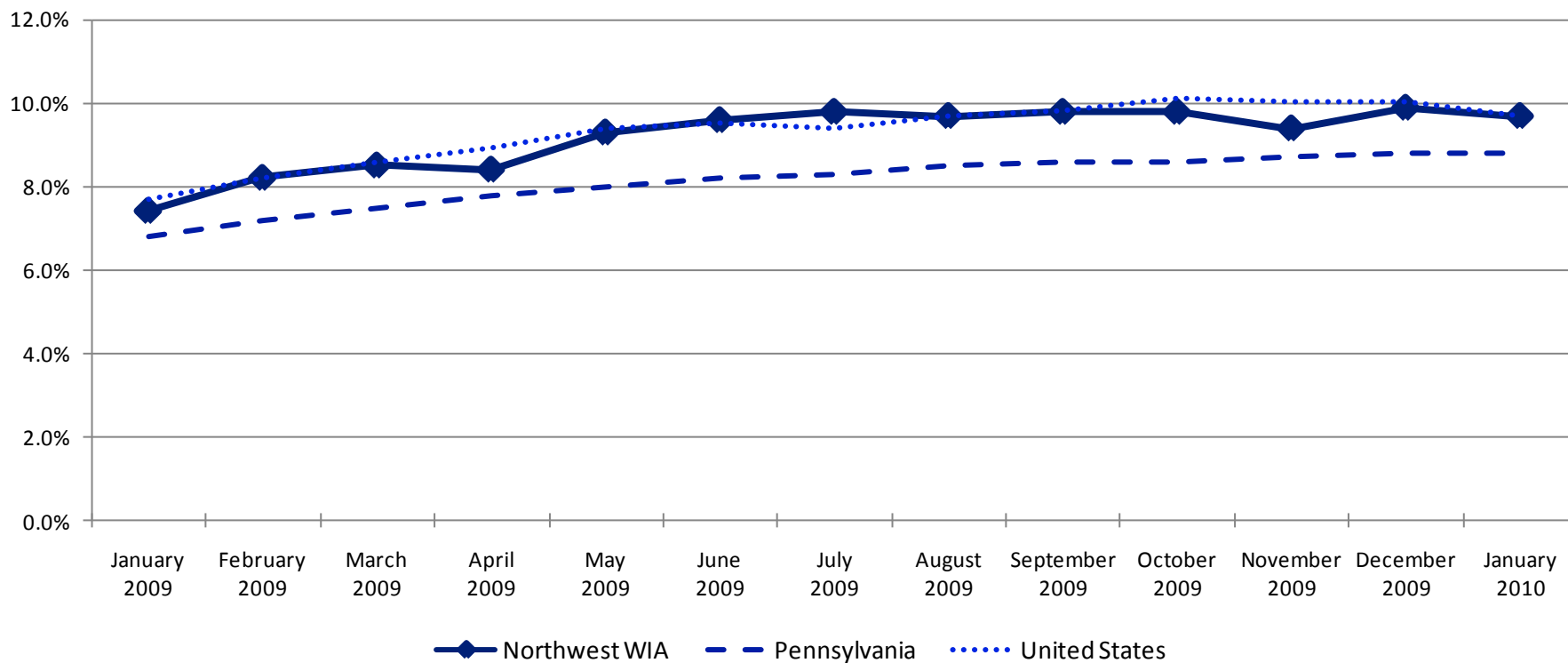
Northwest Region	↓	↑
Pennsylvania	↑	↑
United States	↓	↑

Unemployment Rate:

change since last... month year

Northwest Region	↓	↑
Pennsylvania	--	↑
United States	↓	↑

Unemployment Rates

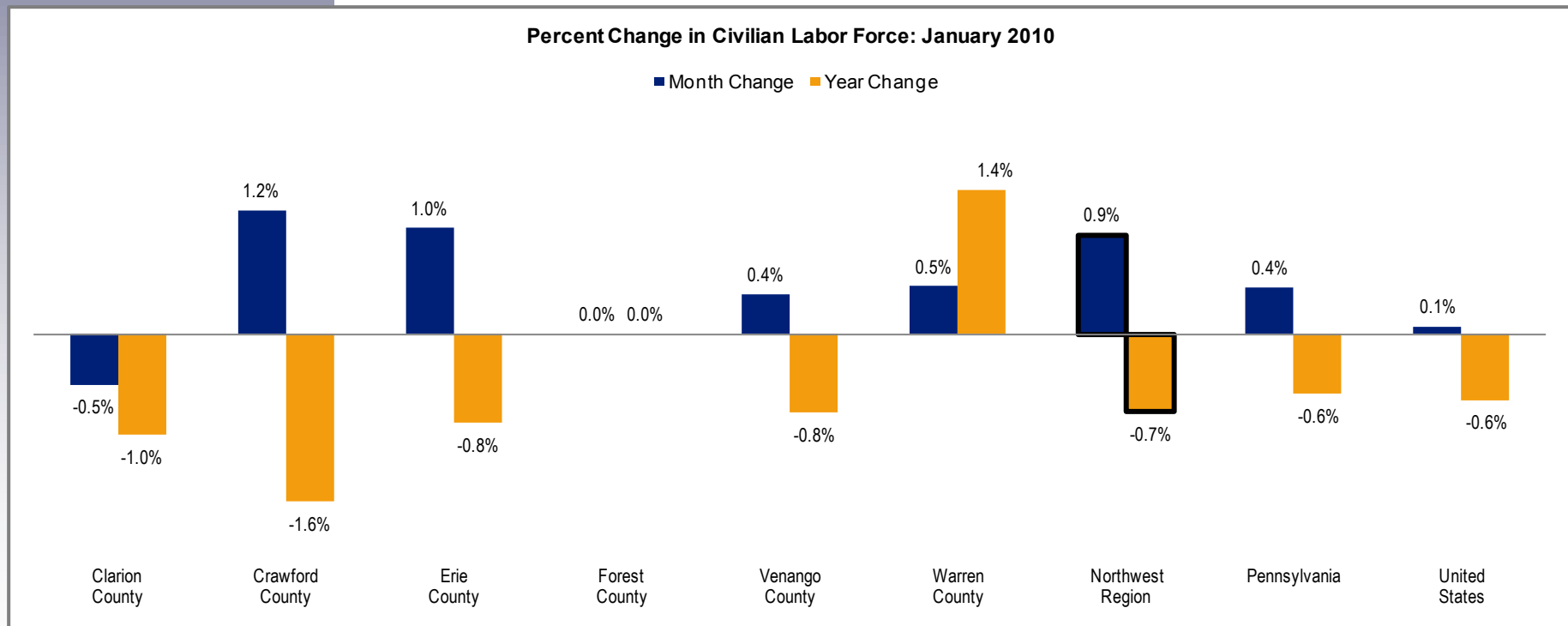


Civilian Labor Force

Clarion County	20,700
Crawford County	43,100
Erie County	140,800
Forest County	2,400
Venango County	26,400
Warren County	22,200

The labor force is comprised of individuals who are working, waiting for a layoff to end, or are actively seeking work. The graph below highlights changes in the civilian labor force as a percentage of an area's total civilian labor force.

	Change Since		
	January 2010	December 2009	January 2009
Northwest Region	255,800	2,400	-1,900
Pennsylvania	6,421,000	28,000	-37,000
United States	153,170,000	111,000	-970,000

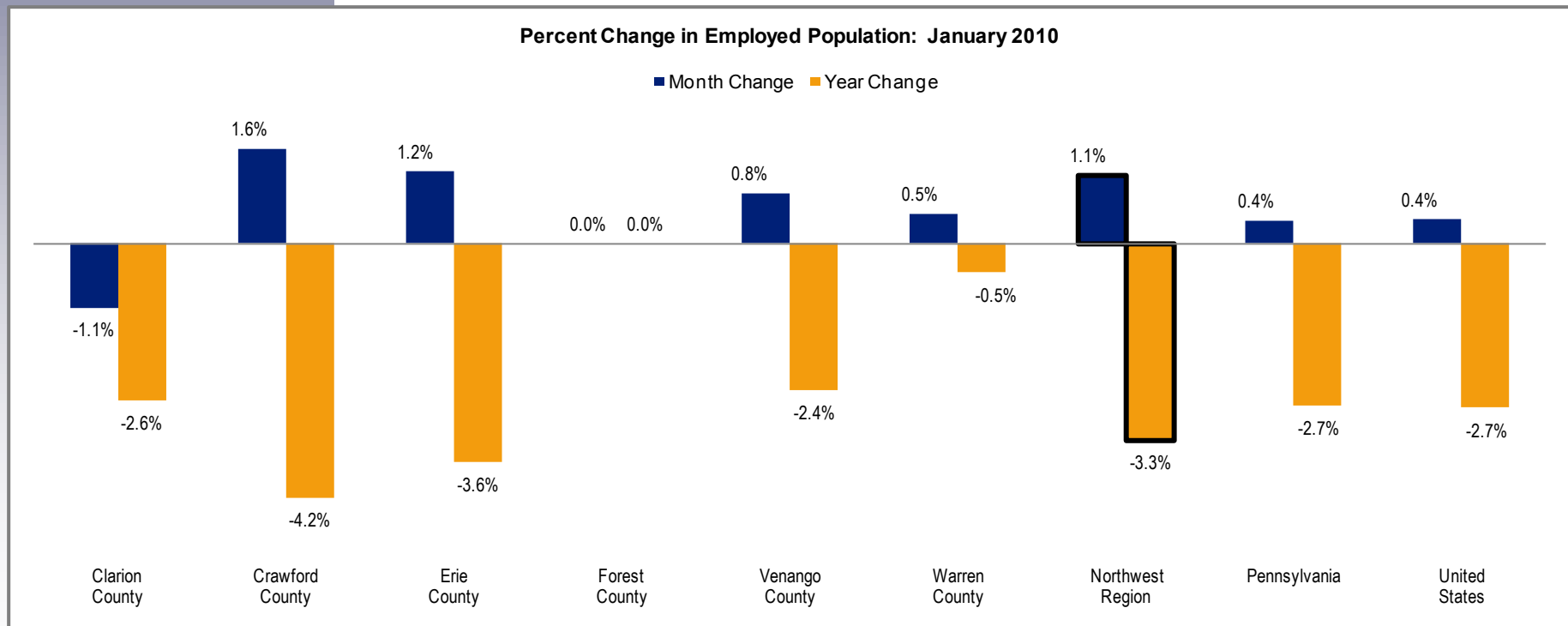


Employed Population

Clarion County	18,600
Crawford County	38,600
Erie County	127,000
Forest County	2,100
Venango County	24,000
Warren County	20,400

The employed population includes individuals who are working. The graph below highlights changes in employment as a percentage of an area's total employment.

	Change Since		
	January 2010	December 2009	January 2009
Northwest Region	230,900	2,600	-7,800
Pennsylvania	5,856,000	22,000	-162,000
United States	138,333,000	541,000	-3,888,000

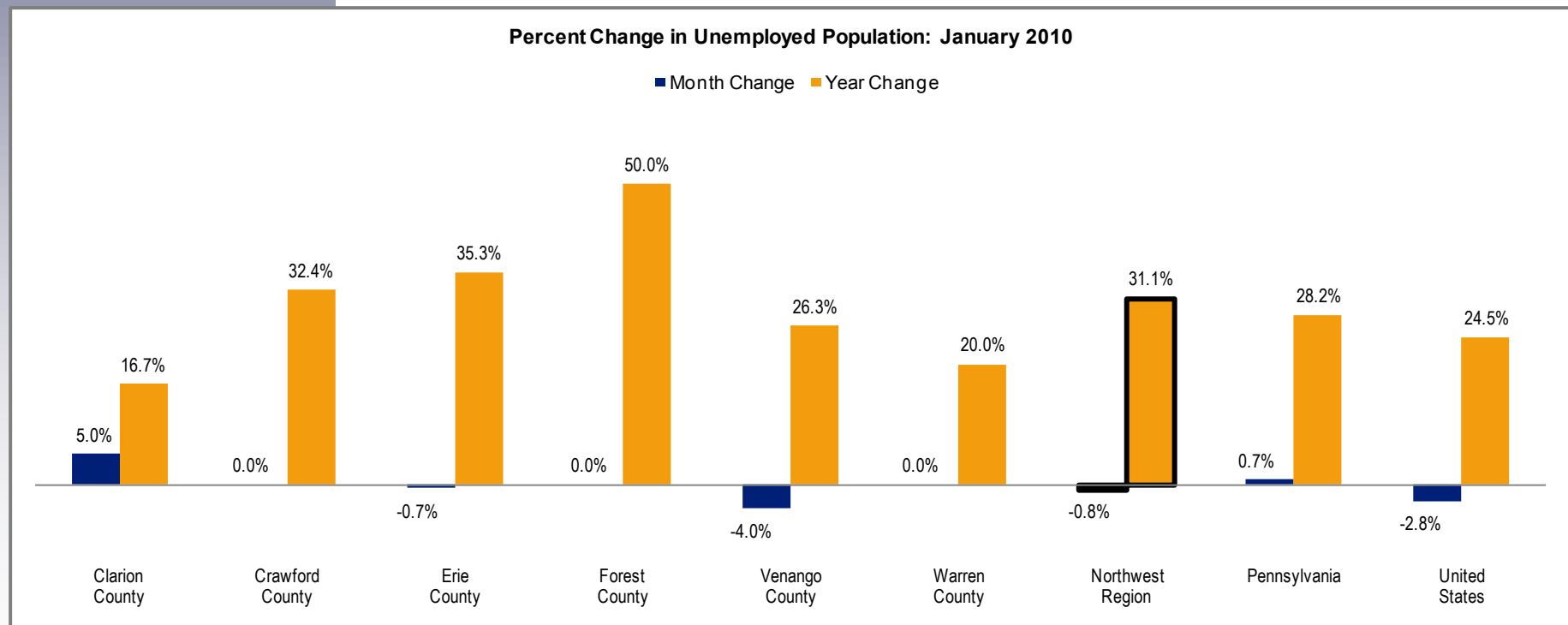


Unemployed Population

Clarion County	2,100
Crawford County	4,500
Erie County	13,800
Forest County	300
Venango County	2,400
Warren County	1,800

The unemployed population is made up of individuals who are not working, but are waiting for a layoff to end or are actively seeking work. The graph below highlights changes in unemployment as a percentage of an area's total unemployment.

	January 2010	Change Since	
		December 2009	January 2009
Northwest Region	24,900	-200	5,900
Pennsylvania	564,000	4,000	124,000
United States	14,837,000	-430,000	2,918,000



Unemployment Rates

	January 2010	December 2009	January 2009
Clarion County	10.0%	9.8%	8.8%
Crawford County	10.4%	10.7%	7.9%
Erie County	9.8%	10.0%	7.2%
Forest County	12.7%	12.3%	9.4%
Venango County	9.1%	9.6%	7.3%
Warren County	8.3%	8.3%	6.6%
Northwest Region	9.7%	9.9%	7.4%
Pennsylvania	8.8%	8.8%	6.8%
United States	9.7%	10.0%	7.7%

The unemployment rate represents the proportion of individuals in the civilian labor force who are not working, but are waiting for a layoff to end or are actively seeking work. The graph below highlights changes in unemployment rates.

