

Northwest Region Labor Market Status Report -- May 2010

Civilian Labor Force:

change since last... month year

Northwest Region	↓	↑
Pennsylvania	↓	↑
United States	↓	↓

Employed Population:

change since last... month year

Northwest Region	↓	↓
Pennsylvania	↓	↓
United States	↓	↓

Unemployed Population:

change since last... month year

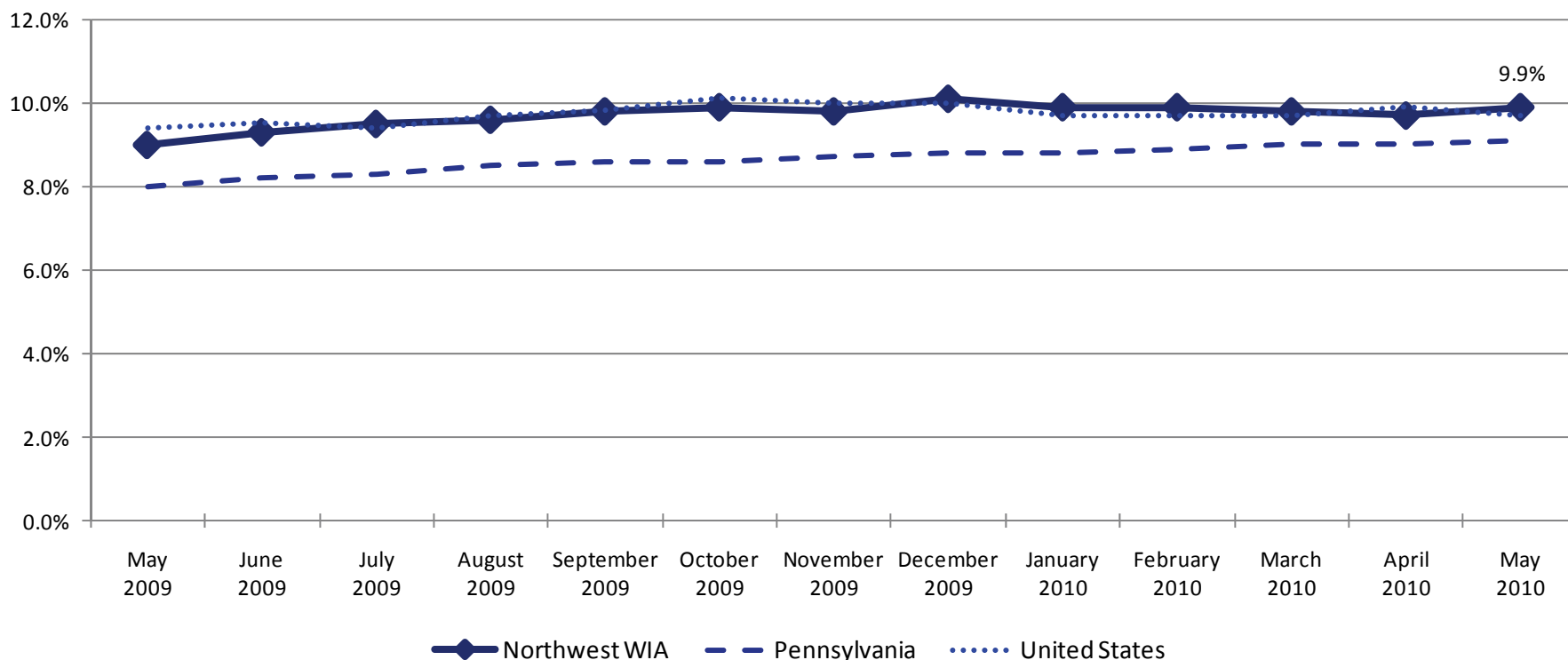
Northwest Region	↑	↑
Pennsylvania	↑	↑
United States	↓	↑

Unemployment Rate:

change since last... month year

Northwest Region	↑	↑
Pennsylvania	↑	↑
United States	↓	↑

Unemployment Rates

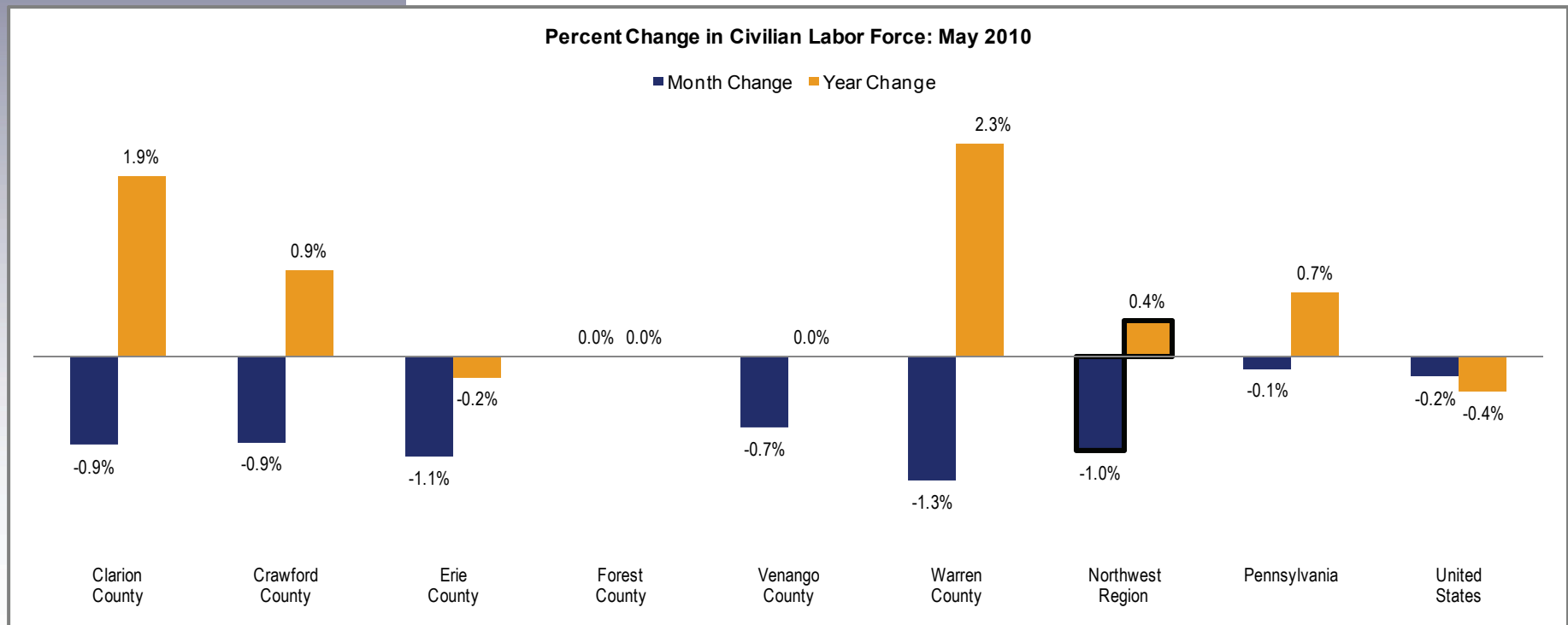


Civilian Labor Force

Clarion County	21,100
Crawford County	43,700
Erie County	140,300
Forest County	2,400
Venango County	26,500
Warren County	22,400

The labor force is comprised of individuals who are working, waiting for a layoff to end, or are actively seeking work. The graph below highlights changes in the civilian labor force as a percentage of an area's total civilian labor force.

	Change Since		
	May 2010	April 2010	May 2009
Northwest Region	256,400	-2,600	1,000
Pennsylvania	6,463,000	-8,000	44,000
United States	154,393,000	-322,000	-563,000



Employed Population

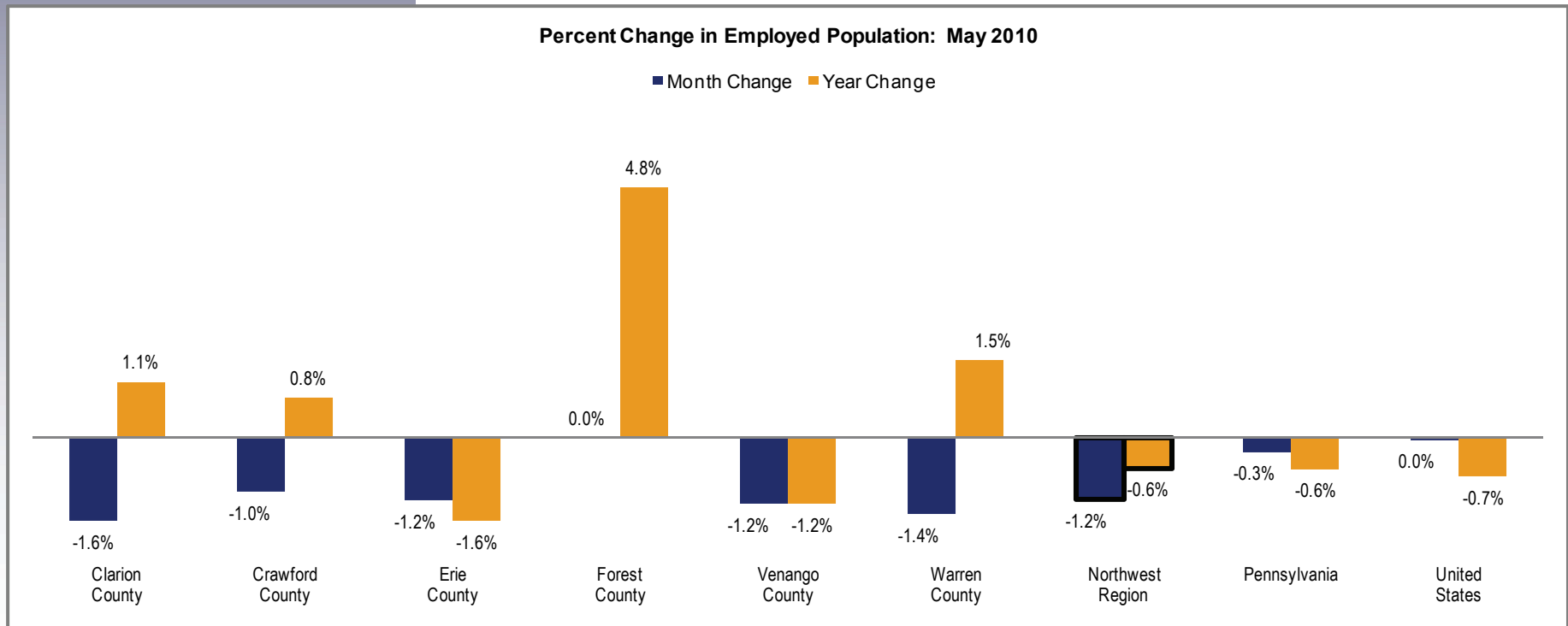
Clarion County	18,900
Crawford County	39,300
Erie County	126,200
Forest County	2,200
Venango County	23,900
Warren County	20,500

The employed population includes individuals who are working. The graph below highlights changes in employment as a percentage of an area's total employment.

	Change Since		
	May 2010	April 2010	May 2009
Northwest Region	231,100	-2,700	-1,300
Pennsylvania	5,872,000	-15,000	-34,000
United States	139,420,000	-35,000	-1,018,000

Percent Change in Employed Population: May 2010

■ Month Change ■ Year Change



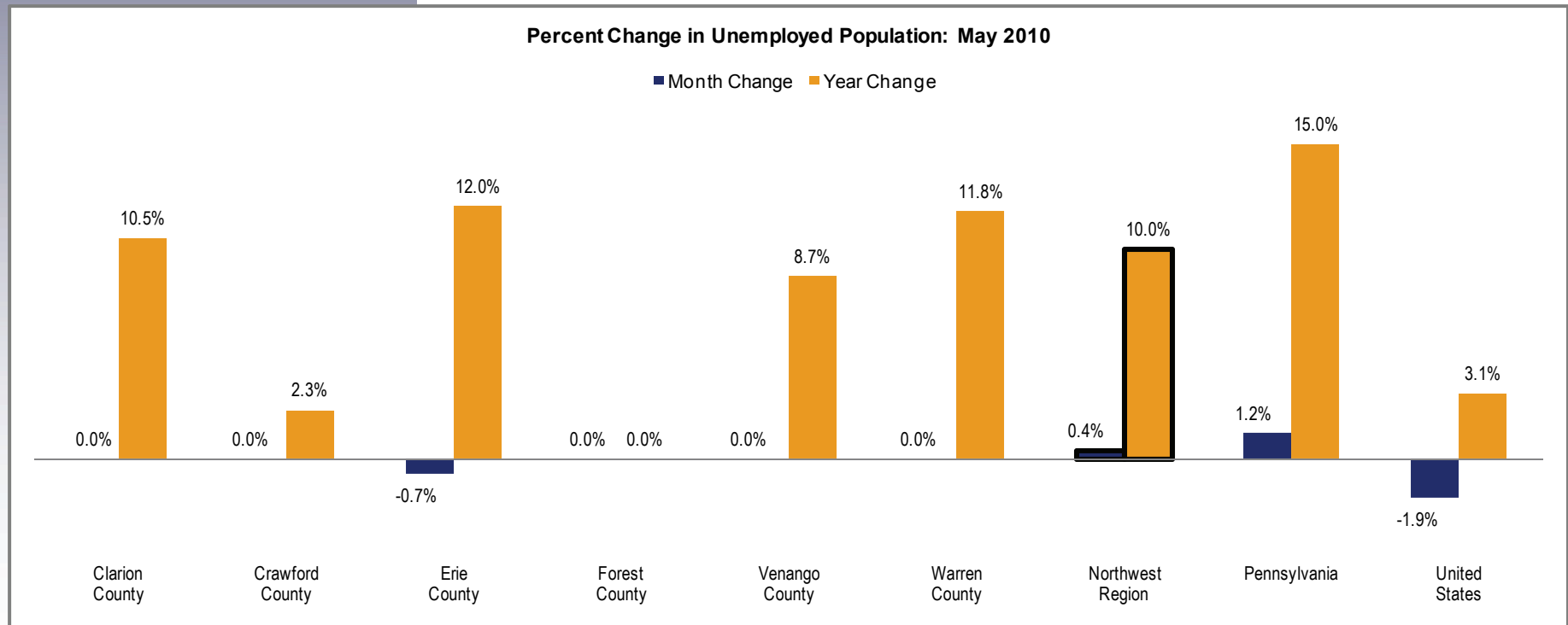
Unemployed Population

Clarion County	2,100
Crawford County	4,400
Erie County	14,000
Forest County	300
Venango County	2,500
Warren County	1,900

The unemployed population is made up of individuals who are not working, but are waiting for a layoff to end or are actively seeking work. The graph below highlights changes in unemployment as a percentage of an area's total unemployment.

	Change Since		
	May 2010	April 2010	May 2009
Northwest Region	25,300	100	2,300
Pennsylvania	591,000	7,000	77,000
United States	14,973,000	-287,000	455,000

Percent Change in Unemployed Population: May 2010



Unemployment Rates

	May 2010	April 2010	May 2009
Clarion County	10.1%	9.7%	9.4%
Crawford County	10.2%	9.9%	9.9%
Erie County	10.0%	10.0%	8.9%
Forest County	11.3%	11.1%	10.7%
Venango County	9.6%	9.3%	8.6%
Warren County	8.5%	8.3%	7.7%
Northwest Region	9.9%	9.7%	9.0%
Pennsylvania	9.1%	9.0%	8.0%
United States	9.7%	9.9%	9.4%

The unemployment rate represents the proportion of individuals in the civilian labor force who are not working, but are waiting for a layoff to end or are actively seeking work. The graph below highlights changes in unemployment rates.

